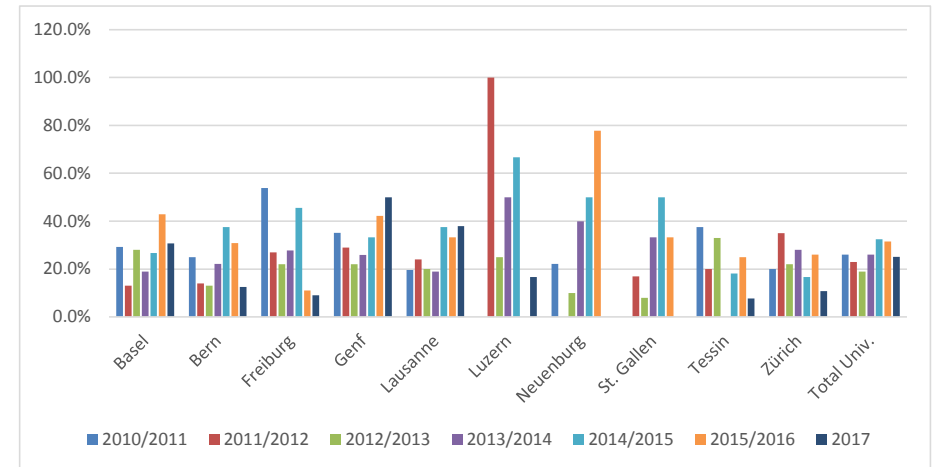


**Neuanstellungen ordentliche, ausserordentliche und assoziierte (unbefristet) Professorinnen an den Universitäten 2010 - 2017 - Kat. I**

	2010/2011	2011/2012	2012/2013	2013/2014	2014/2015	2015/2016	2017
Basel	29.2%	13%	28%	19%	27%	43%	31%
Bern	25.0%	14%	13%	22%	38%	31%	13%
Freiburg	53.8%	27%	22%	28%	46%	11%	9%
Genf	35.1%	29%	22%	26%	33%	42%	50%
Lausanne	19.6%	24%	20%	19%	38%	33%	38%
Luzern	0.0%	100%	25%	50%	67%	0%	17%
Neuenburg	22.2%	0%	10%	40%	50%	78%	0%
St. Gallen	0.0%	17%	8%	33%	50%	33%	0%
Tessin	37.5%	20%	33%	0%	18%	25%	8%
Zürich	20.0%	35%	22%	28%	17%	26%	11%
<b>Total Univ.</b>	<b>26.1%</b>	<b>23.0%</b>	<b>19.0%</b>	<b>26.0%</b>	<b>32.4%</b>	<b>31.5%</b>	<b>25.2%</b>



**Neuanstellungen von Assistenzprofessorinnen an den Universitäten 2010 - 2017 - Kat. II**

	2010/2011	2011/2012	2012/2013	2013/2014	2014/2015	2015/2016	2017
Basel	12.0%	33%	38%	25%	71%	38%	33%
Bern	50.0%	26%	31%	38%	50%	54%	25%
Freiburg	25.0%	33%	0%	50%	38%	33%	33%
Genf	46.0%	30%	18%	60%	21%	57%	67%
Lausanne	21.0%	56%	40%	39%	25%	35%	43%
Luzern	50.0%	0%	50%	100%	67%	0%	50%
Neuenburg	0.0%	100%	40%	100%	25%	40%	0%
St. Gallen	24.0%	21%	30%	29%	44%	7%	27%
Tessin	100.0%	25%	0%	0%	33%	100%	100%
Zürich	15.0%	28%	11%	48%	41%	16%	40%
<b>Total Univ.</b>	<b>27.0%</b>	<b>31.0%</b>	<b>27.0%</b>	<b>41.0%</b>	<b>42.0%</b>	<b>34.0%</b>	<b>37.4%</b>

