

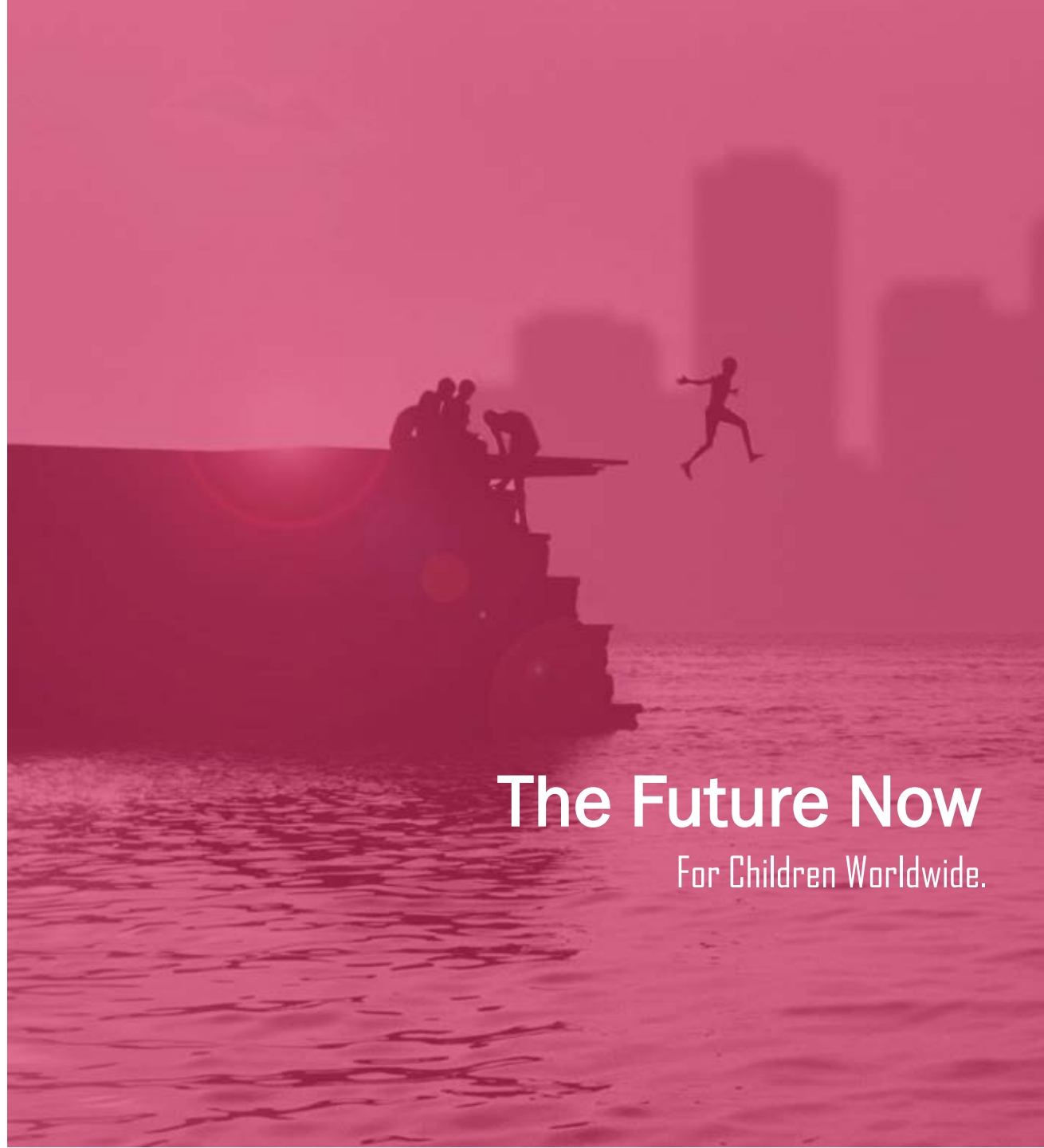
## Research

*foundation*  
**BOTNAR**

SUDAC Intern.  
Conference 2019

*Session: BEST practices  
outside SUDAC*

18 October 2019



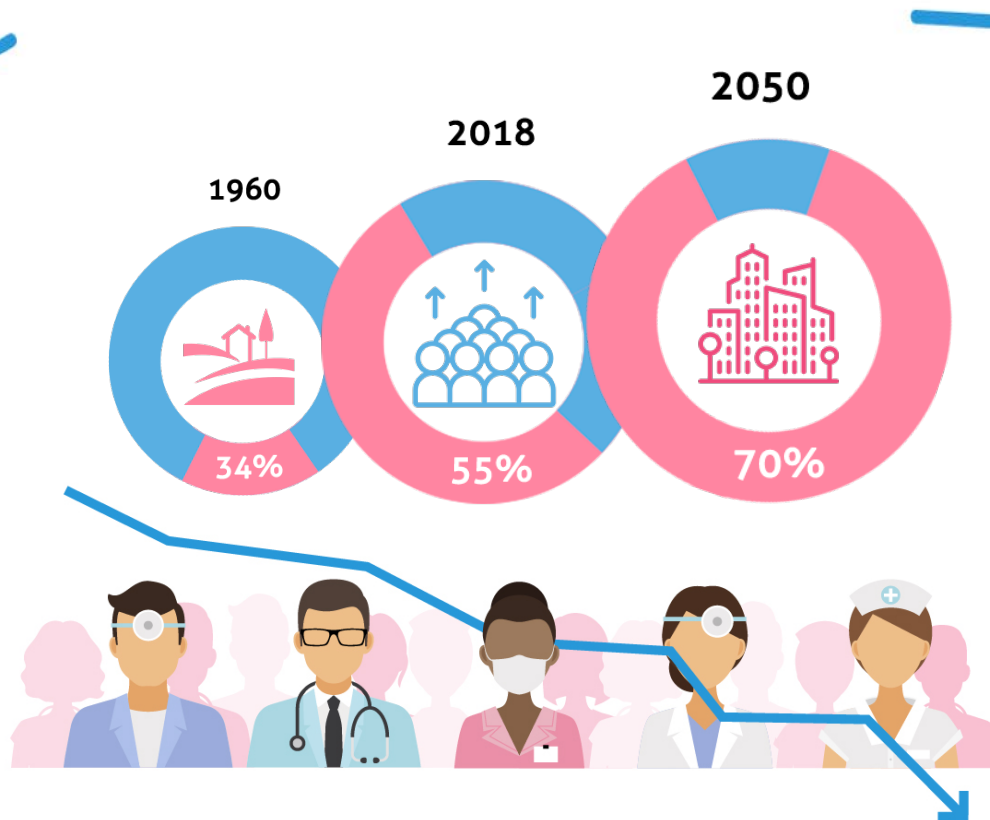
**The Future Now**  
For Children Worldwide.

## Who we are

- \* A philanthropic foundation established in 2003
- \* Improving the health and wellbeing of children and young people in growing urban environments globally
- \* Continuing the Botnar family's philanthropic legacy
- \* Member of Swiss Foundations.

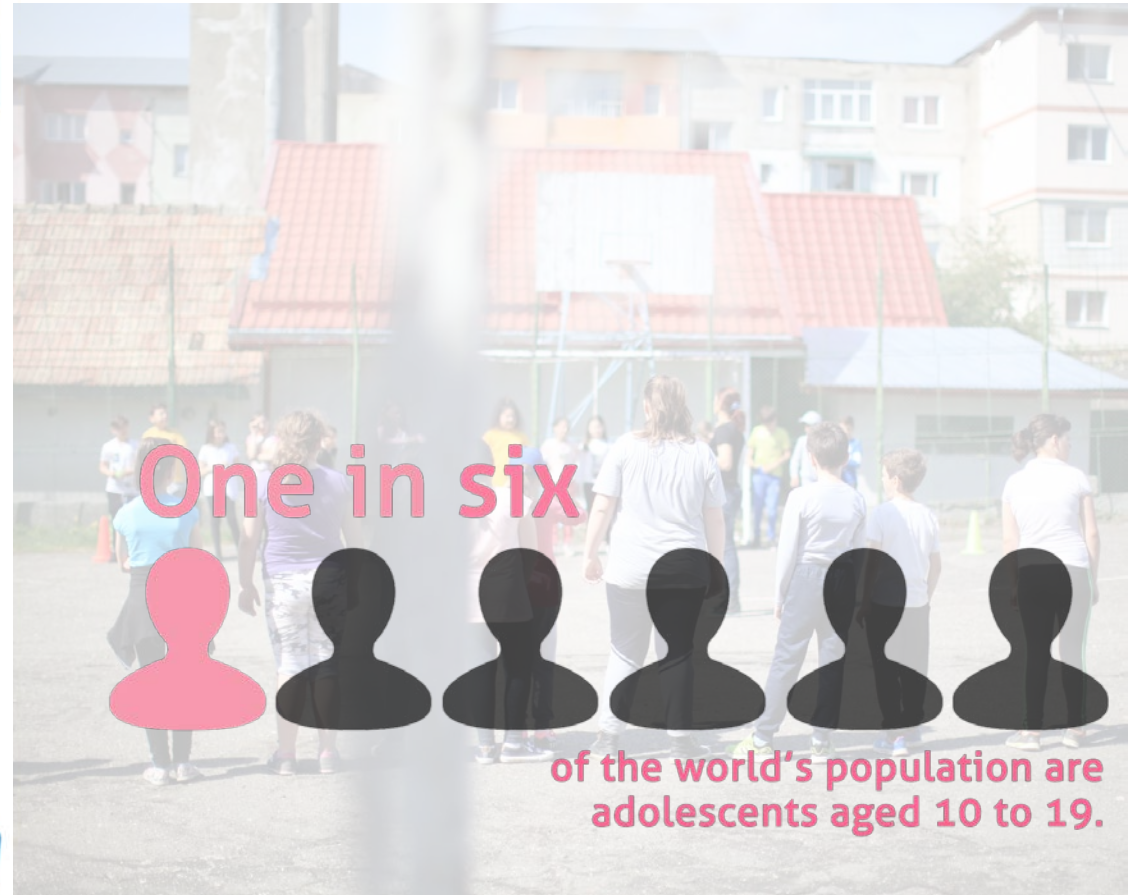


How the world is  
changing



**By 2030, there will be an estimated  
18 million shortfall in health workers**

## Young people and health risks



## The opportunity



## Our areas of work



Cities fit for children



AI for child health and wellbeing



Learning and entrepreneurship

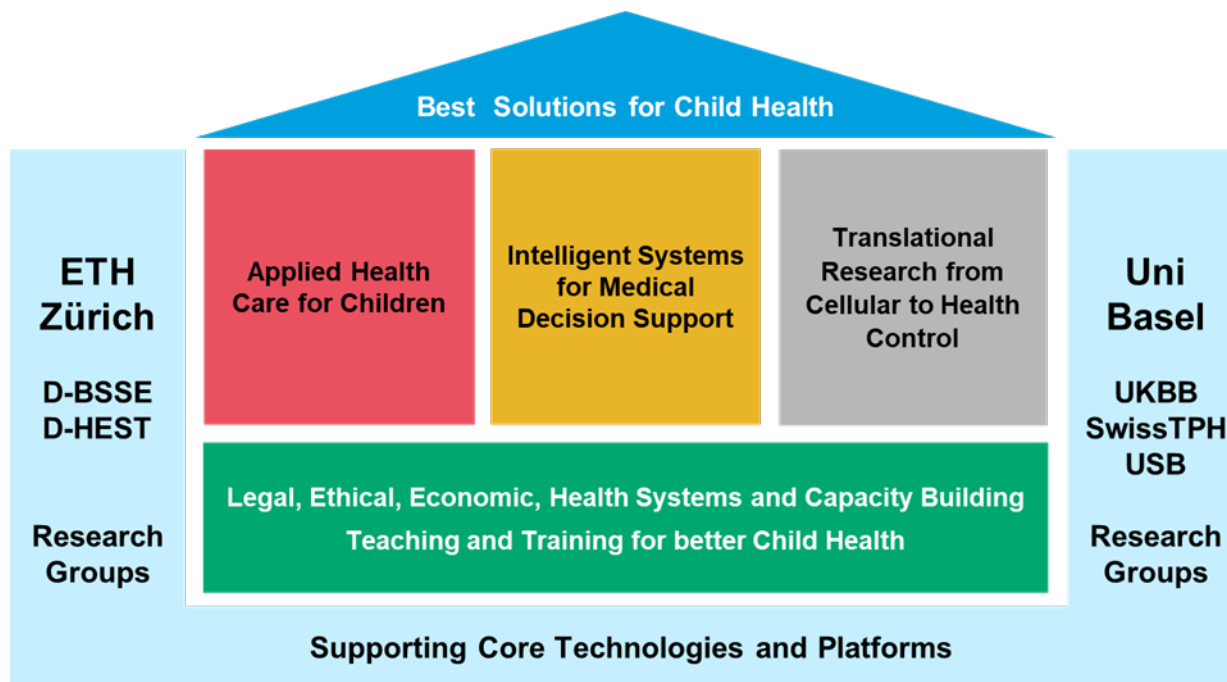
*Our Areas of Work:*

## Research

- \* 28 Projects
- \* Two stages process
- \* From 25'000 CHF to 7 mio CHF



## BRCCH





## Antibiotic over-prescription at primary care level

18 month old child

Lack of clinical guidance

Lack of diagnostic tools



- Fever episode
- Antibiotic

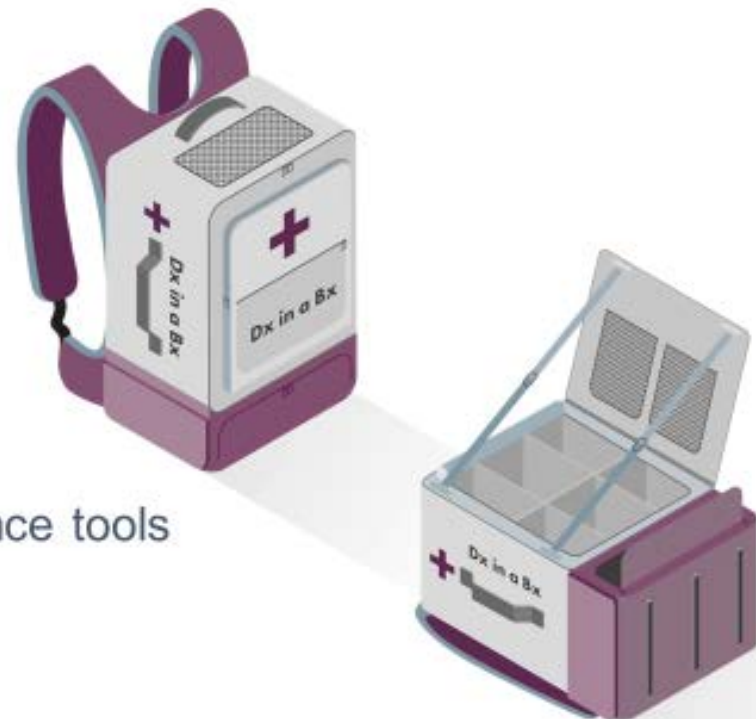
**Poor patient outcome:**

- Antibiotic adverse events
- Deterioration of gut flora
- Antibiotic resistance

## The right tools in the right place

### The goal

A simple point of care tool  
for effective management  
of childhood illnesses that combines:  
key diagnostics tools & clinical guidance tools



## The DYNAMIC project



**ePOCT:** - extended medical content  
- new software  
- full connection to biosensors and rapid tests

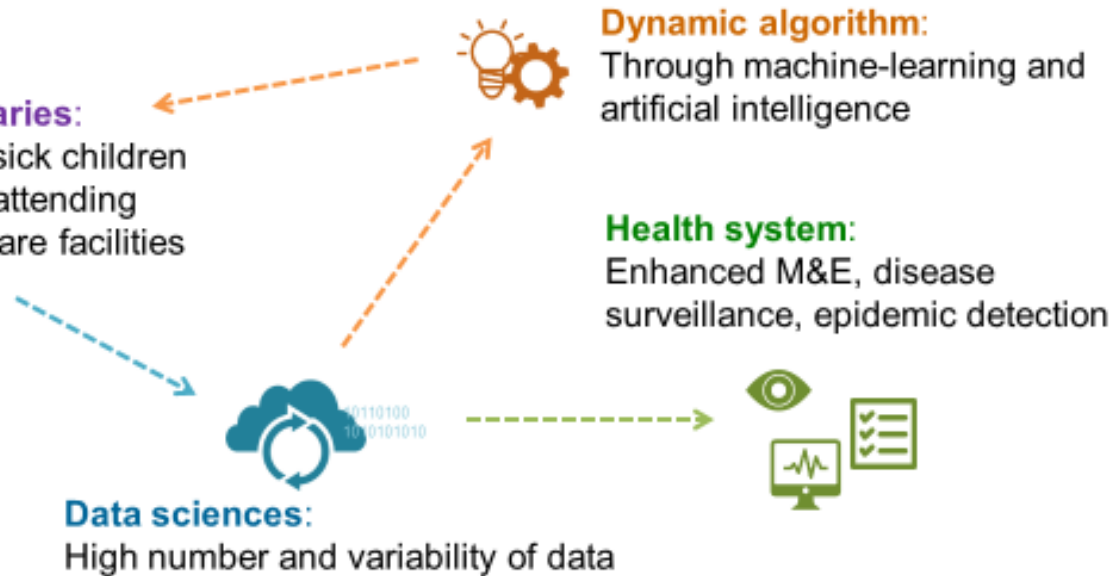
### Validation:

- 70 health facilities
- 2 semi-urban districts in Tanzania



### Beneficiaries:

500,000 sick children per year attending primary care facilities



## Digitising the Research Fairness Initiative (RFI)

- \* Cohred
- \* One-off Grant



## The International Digital Health & AI Research Collaborative

**Progress on digital connectivity but access alone is not enough..**



By 2030, every adult should have affordable access to digital networks, as well as digitally-enabled financial and health services, as a means to make a substantial contribution to achieving the SDGs.

**Recommendation 1a  
from Report of the  
UN Secretary-General's  
High-level Panel on  
Digital Cooperation,  
June 2019**



## The International Digital Health & AI Research Collaborative

### WHO has made digital health a priority



Countries will be reluctant to share their data unless they see real public health benefits and feel that groups that provide data are treated fairly.

There should be a **global governance framework** for AI in health.

There is a **risk that unevaluated apps** could end up doing more harm than good.

**WHO is committed to making access to and transparency of health data a public good.**

**Dr. Soumya Swaminathan, Chief Scientist, WHO, Nature, April 2019; Interview with BBC, 2019.**



## The International Digital Health & AI Research Collaborative

### Initial concept



- A **neutral cross-national platform** focused on digital health and AI for health where partners can collaborate through a ‘hubs & spokes’ model to:
  - Develop a **common research agenda**/launch global collaborations on D/AI for health;
  - Define, develop and share global public goods such as **standards and benchmarks** for quality of data sets and AI algorithms;
  - Shift focus away from owning and hoarding data/AI to collaborative **flow and use**;
  - **Pool strengths** across regions and domains, **build human capacity** and address as a “**brain trust**” a range of critical concerns and enablers including **technical, legal, human rights**, and other governance aspects.

## The International Digital Health & AI Research Collaborative

### Main value proposition

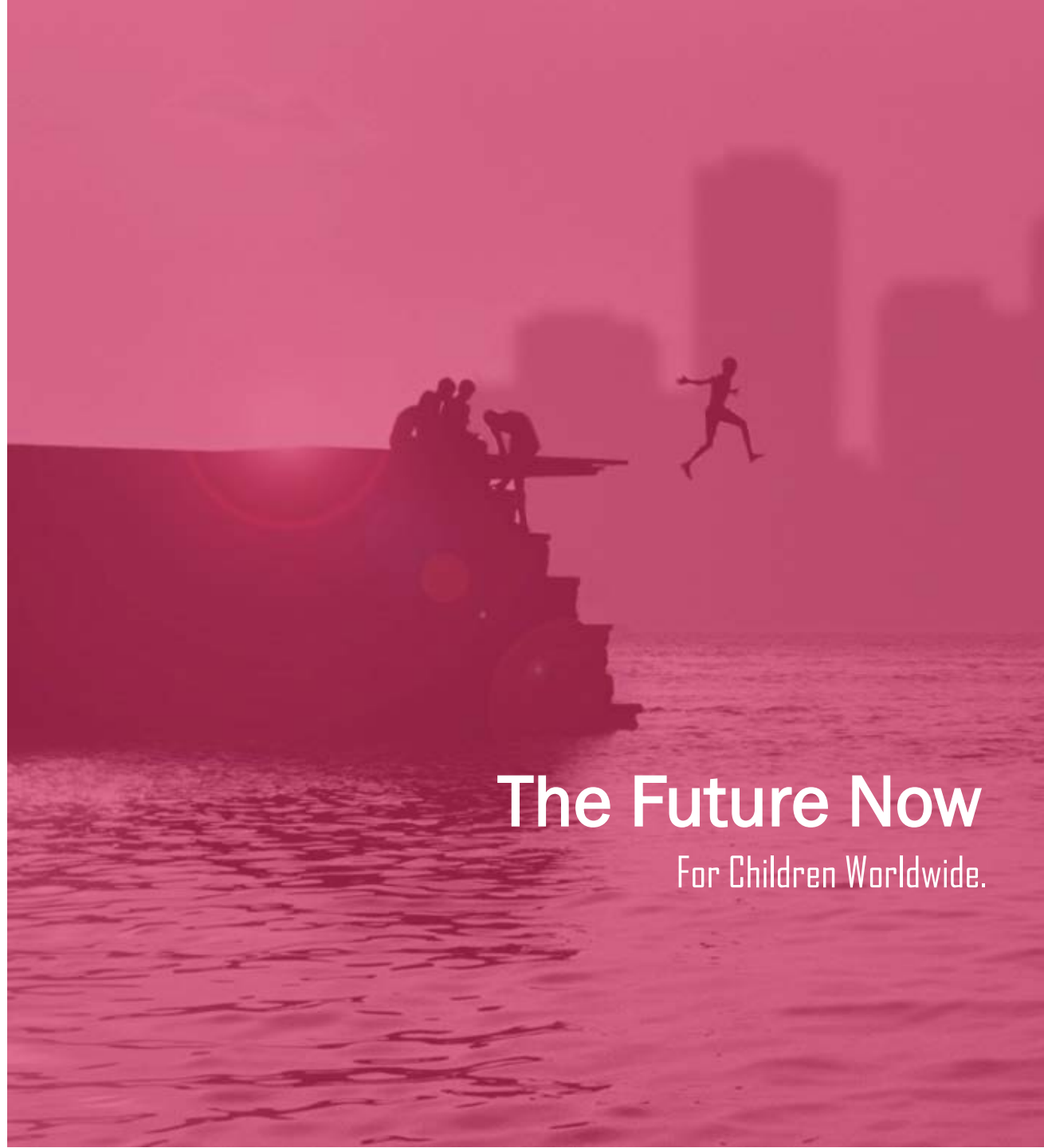


- Collaborative solutions - **data for health, open data, federated learning, reference datasets, testing & evaluation platforms, regulatory sandpits** etc. to avoid 'missed use' and misuse of data and AI;
- **Flexible, inclusive spokes and hubs** model that brings dynamic youthful geographies closer for experience sharing and scaling;
- **Dynamic feedback loops across emerging data architectures, global health challenges, and governance of technology;**
- Leverages strengths of governments, research institutions and businesses by providing a global collaboration platform;
- Hub in **Switzerland** assures political neutrality & commitment to data protection; CERN inspired joint problem solving & HR development;
- **WHO** role on research agenda, avoid duplication, ensure equitable & responsible deployment etc.



*foundation*  
**BOTNAR**

*foundation*  
**BOTNAR**



**The Future Now**  
For Children Worldwide.