

Academy 2030—Partnerships for transformative knowledge and policy

SUDAC Annual Conference 2019—Consortia for Education and Research (COFER)

Head of COFER: Thomas Breu, Centre for Development and Environment (CDE), University of Bern

Academy 2030 Background

- Focus on the **land-health-conflict nexus** (trade-offs between SDGs 3, 15, and 16) in **Kenya and Ethiopia**
- **Collaborative partnerships** to enhance societal dialogue and support policy processes
- Developing and testing of novel transdisciplinary strategies for **data and knowledge sharing**

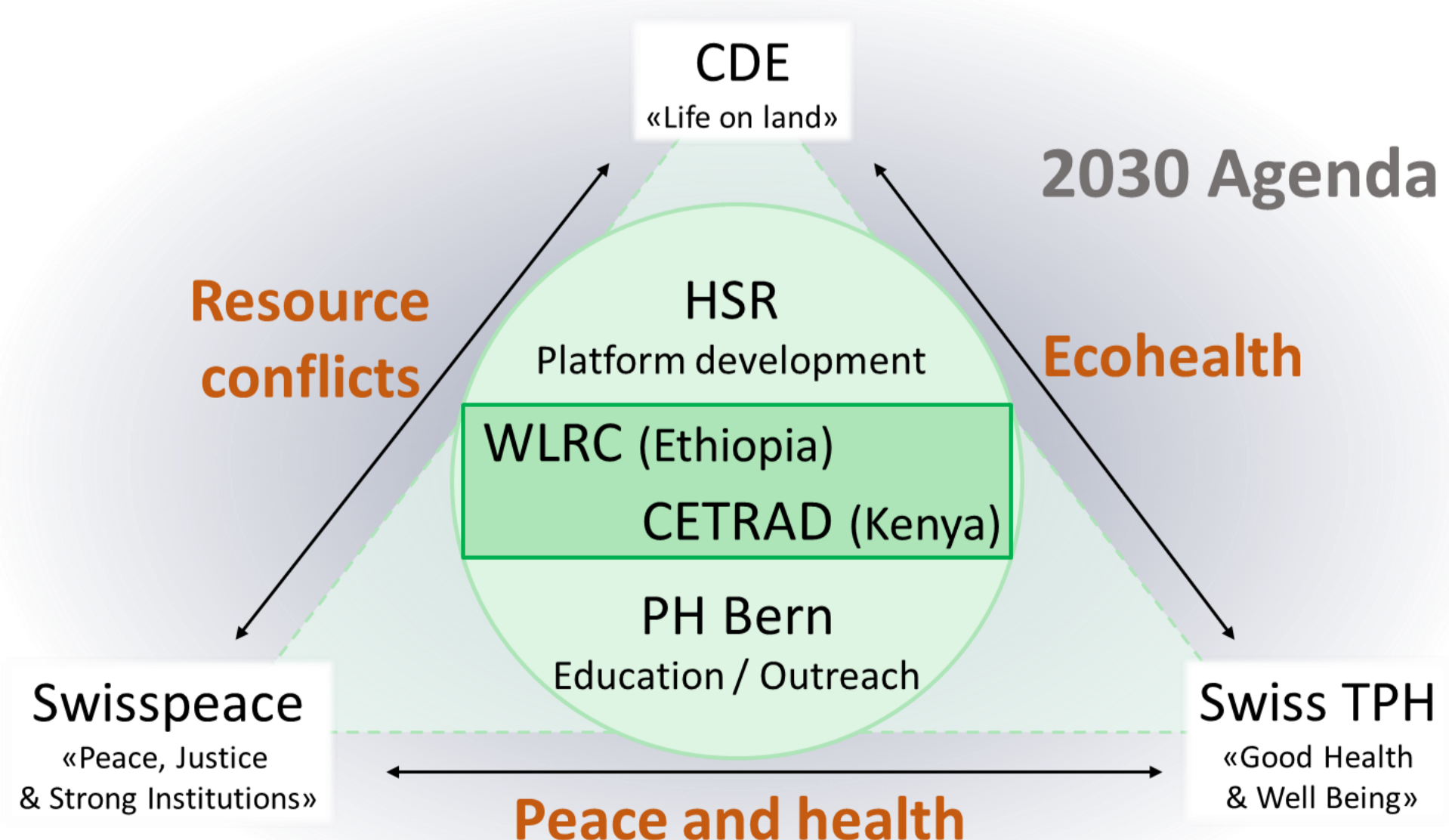
Geographic and thematic scope



- Transport corridor from **Awassa (Ethiopia)** over **Moyale (bordertown)** to **Isiolo (Kenya)**
- Highland-lowland context with **smallholder farmers, pastoralists**, and investments in different sectors
- Focus on recent **infrastructure developments** and effects on land change, health, social inclusion, and conflicts

Combining expertise through collaboration

Three workpackages with **flexible modes of collaboration** to push thematic content, technical development, and capacity building and outreach.



WP1: Case-studies for thematic detail

Creation of selected contextualized knowledge.

Case study 1: Effects of infrastructure development on health, processes of social inclusion/exclusion of the local population, and associated conflicts

Case study 2: Increasing demand for and claims on natural resources (e.g. land) in a highland-lowland and transboundary context and the resulting conflict potential

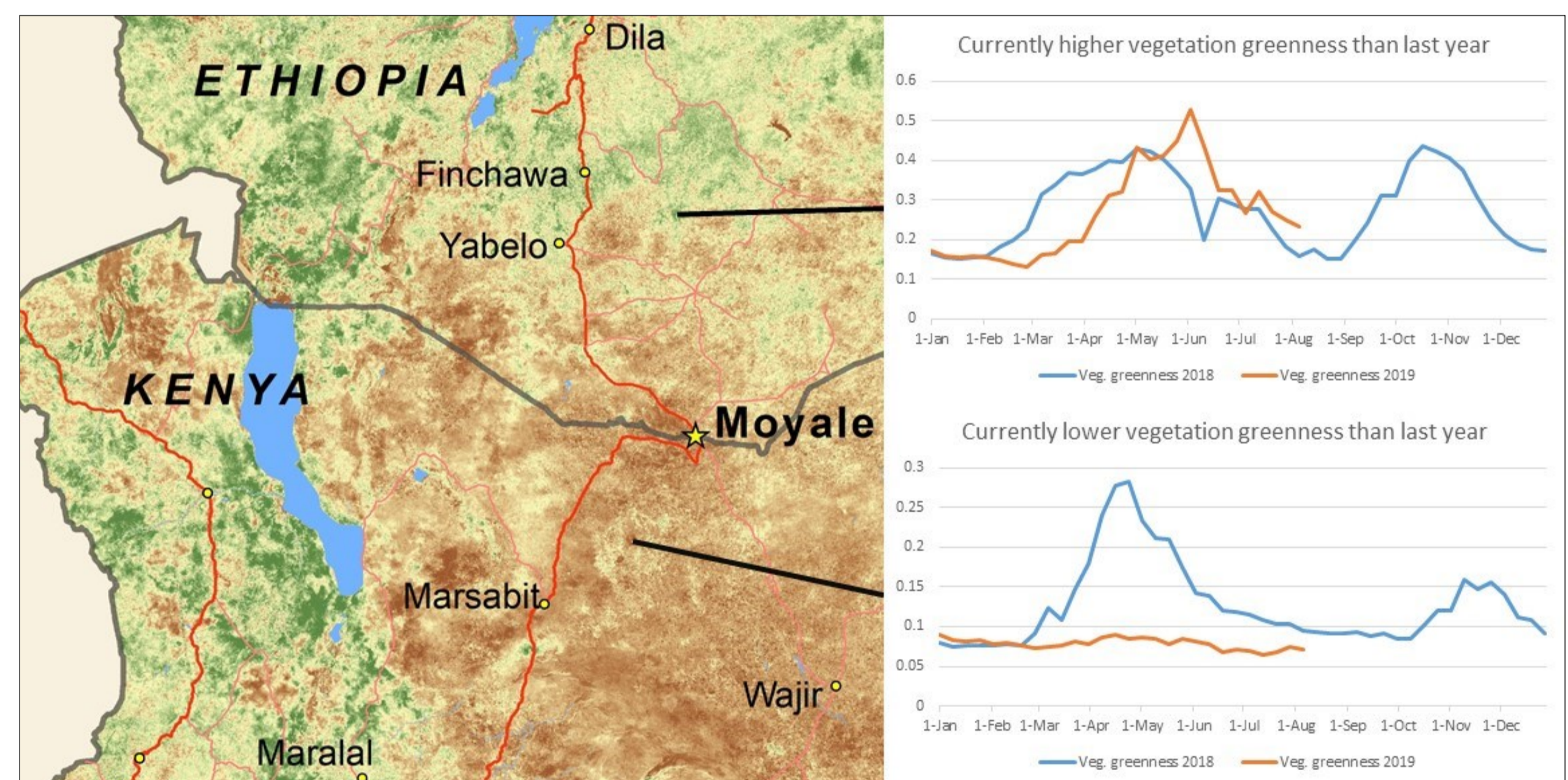
WP2: Platform development and spatial data

Provision and visualization of spatio-temporal data and contextualized knowledge.

Online platform: Knowledge- and data-hub providing access to spatial data and visualizations, case study findings, and outreach and capacity building materials.

Near-real-time data viewer: Near-real-time and Big Data to provide timely information with relevance for the land-conflict-health nexus.

Example: Vegetation greenness time-series data of the ongoing and previous year to identify changes in seasonal vegetation productivity or use.



WP3: Education and outreach:

Linking case studies with spatial data and providing contextualized knowledge for dialogues and policy processes through innovative modes of communication and capacity building.

Communication and outreach: Supporting platform design to improve communication of and access to results and products for academia, government, and stakeholders.

Education: Improving use of platform, products, and results through capacity building and development of training materials.