

swissuniversities

swissuniversities
Effingerstrasse 15, Case Postale
3001 Berne
www.swissuniversities.ch

RESEARCH AND ANIMAL EXPERIMENTATION IN SWITZERLAND: KEY NUMBERS

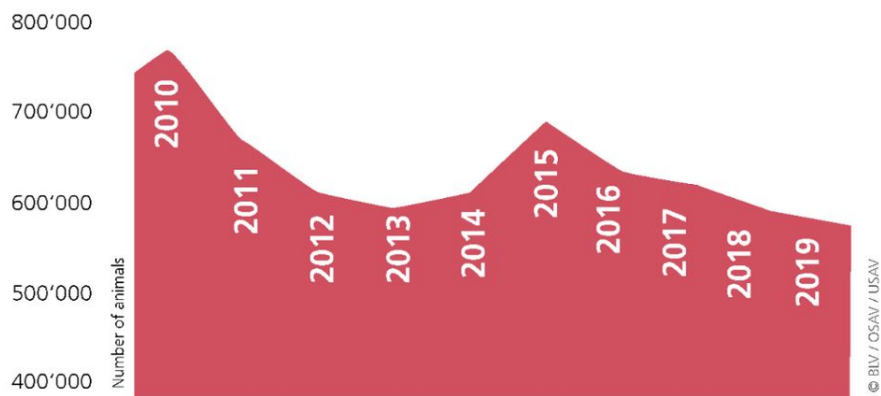
At a glance

Animals in research in Switzerland:

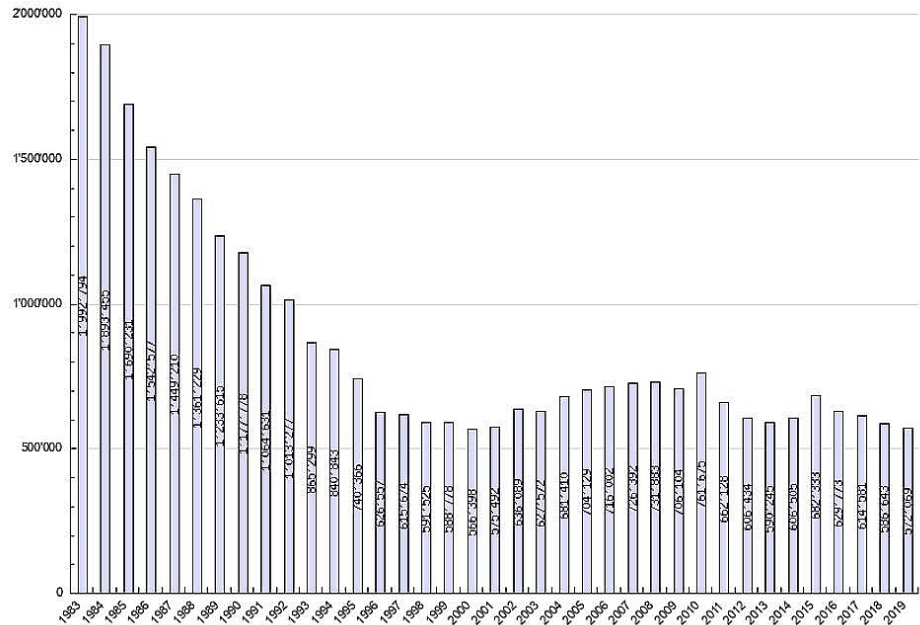
- Animals in research in Switzerland represent approx. 600'000 animals per year since 2012.
- In 2019 the number was 572'069. About 80% of all animals are laboratory rodents (mainly mice and rats).
- In 2019, more than half (58,2%) of all experimental animals in Switzerland are hosted by universities (including ETH and hospitals).
- Severity degrees (2019 figures):
 - None and mild constraint (degree of severity 0 and 1): 69,1%
 - Moderate constraint (degree of severity 2): 27,6%
 - Severe constraint (degree of severity 3): 3,2%

Number of animals in research

The total number of animals used for experiments in 2019 has slightly decreased - as in the previous three years. The decrease in the number is mainly due to the fact that fewer mice and fish were used in comparison to the previous year.



Development since 1983



Source: FSVO/BLV/OSAV/USAV

Number of animals in research by species

The large majority (79%) of laboratory animals are rodents.

Species	%
Rodents	79,3%
Non-mammals (birds, fish, invertebrates...)	15,9 %
Livestock (cattle, pigs (including mini-pigs), sheep...)	3,7 %
Various mammals (spiny mice, hedgehogs...)	0,4 %
Rabbits, dogs, cats, primates	0,7 %

Source : FSVO - <https://www.tv-statistik.ch/fr/statistiques-dynamiques/>
 Period: 2019, takes into account: Universities, ETH, Hospitals, Confederation & Cantons, Industry, Other.

Number of animals in research by severity degrees

The evolution of severity degrees has remained relatively stable since 2010. The 2015 increase was mainly due to behavioral studies on large herds and species conservation projects.



© BLV / OSAV / USAV

Severity degrees by species

Species	SD 0	SD 1	SD 2	SD 3
Rodents	29,62%	32,47%	34,15%	3,76%
Non-mammals (birds, fish, invertebrates...)	73,78%	22,06%	2,85%	1,31%
Livestock (cattle, pigs (including mini-pigs), sheep, ...)	82,14%	16,84%	0,96%	0,06%
Various mammals (spiny mice, hedgehogs, ...)	61,7%	38,22%	0,08%	0,00%
Rabbits, dogs, cats, primates	76,05%	13,31%	10,38%	0,26%
Total	39,03%	30,13%	27,64%	3,20%

Source : FSVO - <https://www.tv-statistik.ch/fr/statistiques-dynamiques/>

Period: 2019, takes into account: Universities, ETH, Hospitals, Confederation & Cantons, Industry, Other.

Where do the experiments take place?

Swiss universities (including ETH and hospitals) proportionally host slightly more than half (58,2%) of all experimental animals in Switzerland.

Swiss Institutions	Number of experimental animals (year 2019)	%
Universities, ETH, Hospitals	332'792	58,2
Confederation, Cantons	22'448	3,9
Industry	156'563	27,4
Others	60'266	10,5
Total	572'069	100

Source : FSVO - <https://www.tv-statistik.ch/fr/statistiques-dynamiques/>